

# STABBING BOARD WINCH

For pulling and positioning pipe segments on drilling rigs, Thern's Stabbing Board Winch delivers superior performance. Steady, reliable operation means crews can place pipe quickly and securely without hassle or delay.



## FEATURES AND BENEFITS

**MOTOR** is a 115 volt single phase, 60 cycle, TENV, reversible electric motor.

**MACHINE CUT GEARS** for accurate and long lasting service.

**ENCLOSED OIL BATH** provides continuous lubrication of gears to minimize wear. Oil seals keep oil in and dirt out.

**INTERNAL MECHANICAL BRAKE** for positive load control.

**CAST ALUMINUM** construction for lightweight strength.

**DURABLE EPOXY FINISH**, in Thern red as standard, for corrosion resistance in harsh or hazardous environments.

**BALL BEARINGS** ensure smooth and efficient operation.

**CABLE PRESSURE BAR (A)** helps maintain uniform winding of wire rope.

**LARGE DIAMETER DRUMS** minimize wear to the wire rope and help extend its life.

**CONTROLS** include 16 foot power cord and 10 foot pendant control.

**2 YEAR "MOVE IT WITH CONFIDENCE" LIMITED WARRANTY** leads the industry

## OPTIONS AND ACCESSORIES

**HYDRAULIC MOTOR** with controls.

**PNEUMATIC MOTOR** with controls.

**GALVANIZED WIRE ROPE** assembly pre-wound on drum.

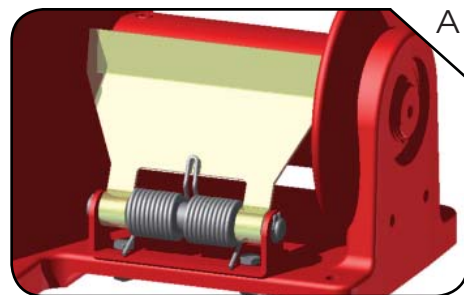
**CUSTOM WIRE ROPE** lengths available.

**MOTOR OPTIONS**, including voltage or phase changes are available. Please contact the factory.

**CONTROL OPTIONS** are available in a wide range of custom configurations for single or variable speed.

**MOUNTING OPTIONS** include wall or ceiling.

**EPOXY FINISH COLOR OPTIONS** available in offshore yellow upon request.



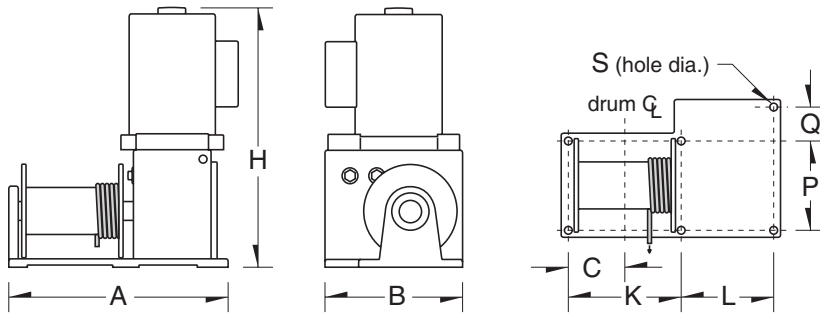
Shown with cable pressure bar.



[www.thern.com](http://www.thern.com)

1.800.843.7648

# STABBING BOARD WINCH



Install wire rope correctly as shown, or brake will not operate properly.

## Important:

It is the owner's or operator's responsibility to determine the suitability of the equipment to its intended use. Study all applicable codes, manuals, and regulations. Be sure to read the Owner's Manual supplied with the equipment before operating it.

## Stabbing Board Winch Dimensions

	A		B		C		H		K		L		P		Q		S (hole dia.)		Ship Wt.	
	(in)	(mm)	(in)	(mm)	(in)	(mm)	(in)	(mm)	(in)	(mm)	(in)	(mm)	(in)	(mm)	(in)	(mm)	(in)	(mm)	(lb)	(kg)
Electric	14.50	369	9.00	229	3.55	91	17.50	445	6.75	172	6.31	161	5.70	145	2.16	55	11/32	9	88	40
Pneumatic	14.50	369	9.00	229	3.55	91	15.00	381	6.75	172	6.31	161	5.70	145	2.16	55	11/32	9	70	32
Hydraulic	14.50	369	9.00	229	3.55	91	12.00	305	6.75	172	6.31	161	5.70	145	2.16	55	11/32	9	72	33

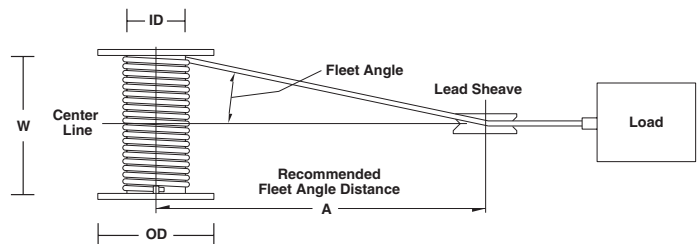
Dimensions are for reference only and subject to change without notice.

## Stabbing Board Winch Drum Dimensions

	Drum Diameter (ID)		Flange Diameter (OD)		Drum Width (W)		Fleet Angle Distance (A) <sup>1</sup>	
	(in)	(mm)	(in)	(mm)	(in)	(mm)	(ft)	(m)
Electric	3.00	77	6.00	153	6.00	153	10	3,0
Pneumatic	3.00	77	6.00	153	6.00	153	10	3,0
Hydraulic	3.00	77	6.00	153	6.00	153	10	3,0

Dimensions are for reference only and subject to change without notice.

<sup>1</sup> Recommended minimum distance between drum and lead sheave for smooth drum.



## Stabbing Board Winch Performance Characteristics

	Motor hp	Load Rating						Wire Rope Dia.		Line Speed				Drum Capacity <sup>2</sup>					
		1st Layer		Mid Drum		Full Drum		(in)	(mm)	1st Layer		Full Drum		1st Layer		Mid Drum		Full Drum	
		(lb)	(kg)	(lb)	(kg)	(lb)	(kg)			(fpm)	(mpm)	(fpm)	(mpm)	(ft)	(m)	(ft)	(m)	(ft)	(m)
Electric <sup>3</sup>	1.2	2,000	908	1,500	681	1,200	545	5/16	7,94	13	4,0	22	6,7	13	4,0	40	12,2	90	27,4
Pneumatic <sup>4,5</sup>	1.2	2,000	908	1,500	681	1,200	545	5/16	7,94	13	4,0	22	6,7	13	4,0	40	12,2	90	27,4
Hydraulic <sup>4,5</sup>	2.3	2,000	908	1,500	681	1,200	545	5/16	7,94	13	4,0	22	6,7	13	4,0	40	12,2	90	27,4

Please contact factory or nearest Thern Distributor for firm fixed price and delivery.

<sup>2</sup> Actual drum capacities may be 25-30% less, due to nonuniform winding. Tension in wire rope will also affect drum capacity.

<sup>3</sup> Motor is 115/1/60 VAC and includes a 16 ft power cord with grounded plug, and a push button pendant control on 10 or 20 ft cord.

<sup>4</sup> For pneumatic and hydraulic models, line speed is based on rated load, actual line speed varies with load weight and power supply.

<sup>5</sup> For pneumatic models, ratings are for 80 cfm at 100 psi. For hydraulic models, ratings are for 4 gpm at 1000 psi.



www.thern.com

1.800.843.7648